

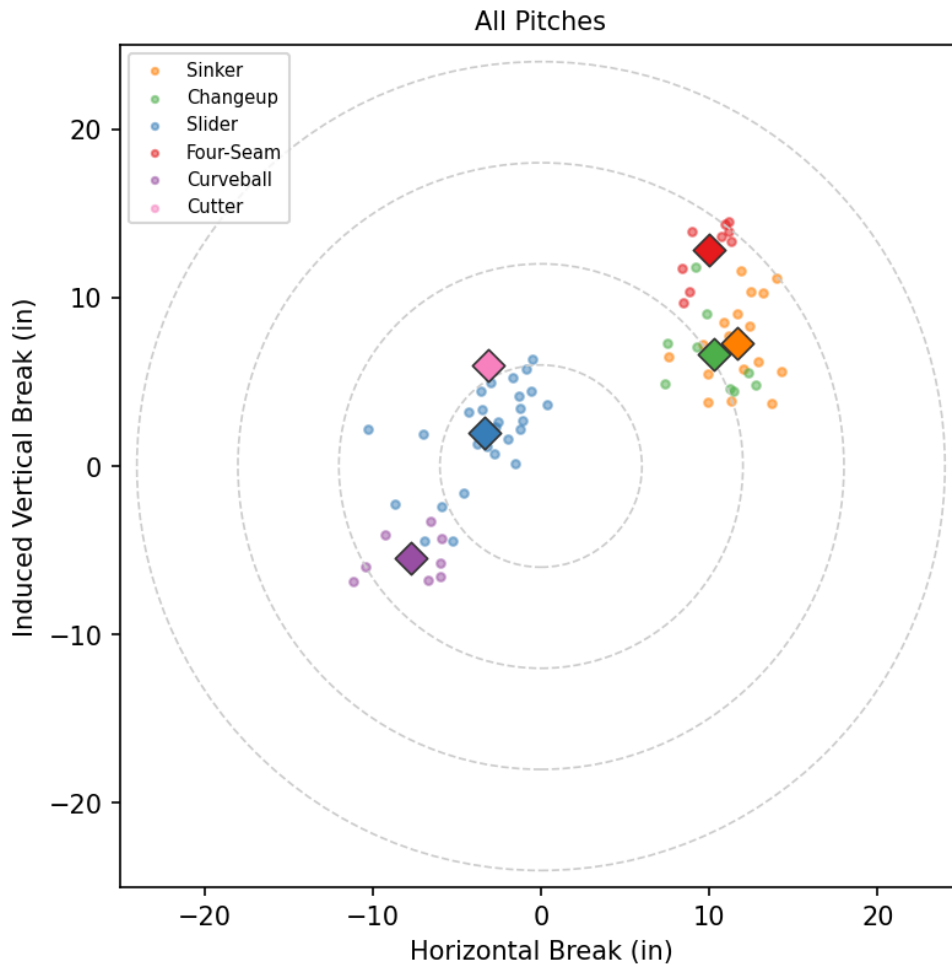
# Aaron Brooks

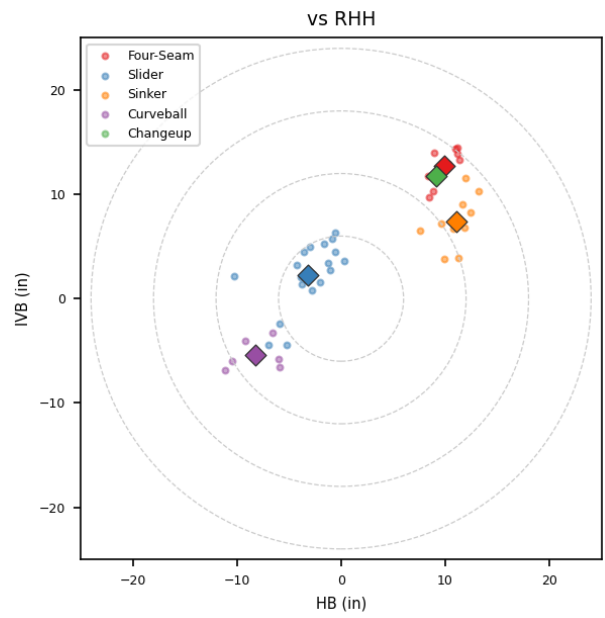
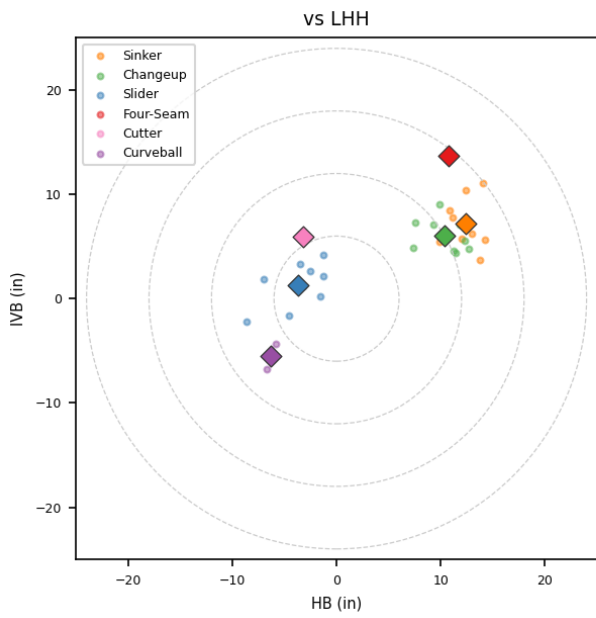
GEN\_MEX | Right | 2026-04-16 to 2026-04-22

## Pitching Profile

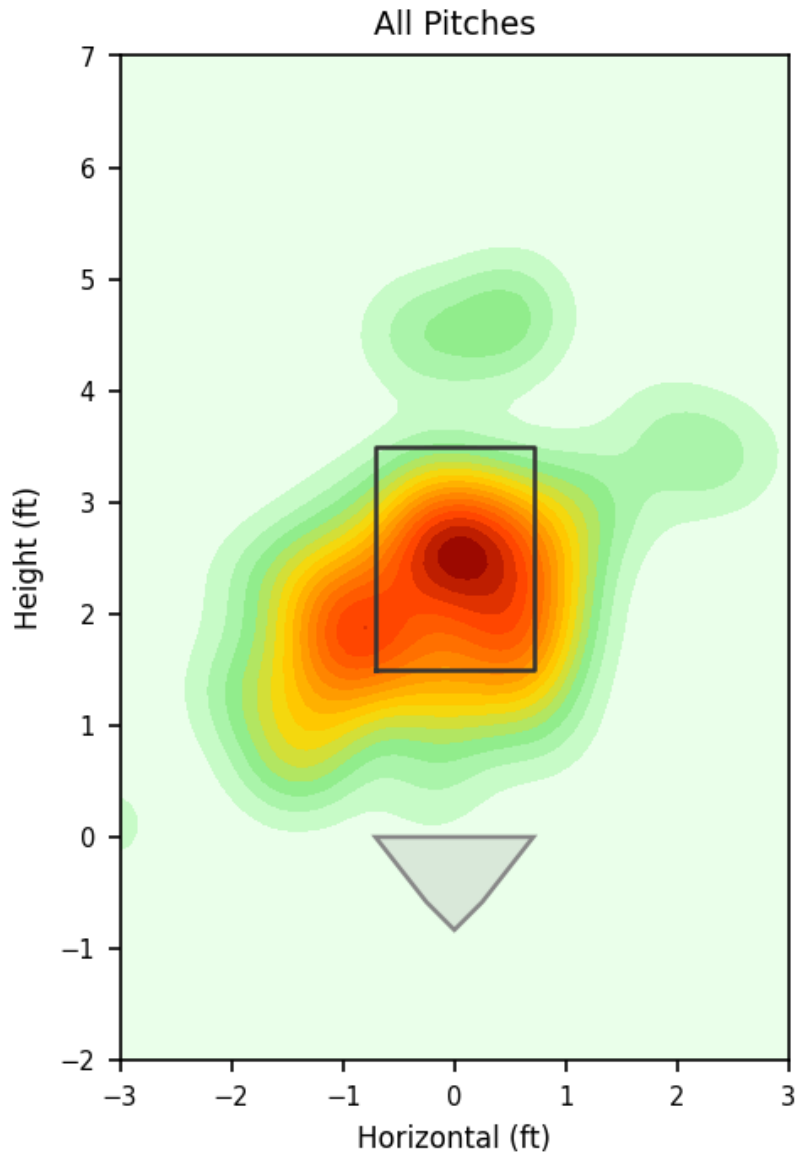
Pitch Type	Count	%	Avg Velo	Max Velo	Avg Spin	IVB	HB	Ext	Whiff%
Slider	28	36.8%	85.6	89.2	2552.0	2.0	-3.3	5.6	66.7%
Sinker	19	25.0%	91.7	93.8	1957.0	7.3	11.7	5.7	25.0%
Changeup	10	13.2%	84.0	88.0	1881.0	6.7	10.3	6.1	25.0%
Four-Seam	10	13.2%	93.3	94.6	2118.0	12.8	10.0	5.7	-
Curveball	8	10.5%	80.8	81.7	2391.0	-5.4	-7.7	5.5	66.7%
Cutter	1	1.3%	87.6	87.6	2672.0	6.0	-3.2	5.7	-

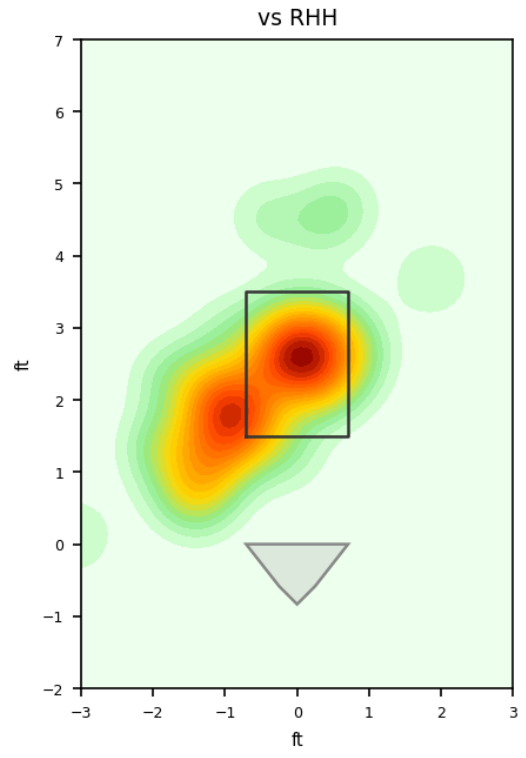
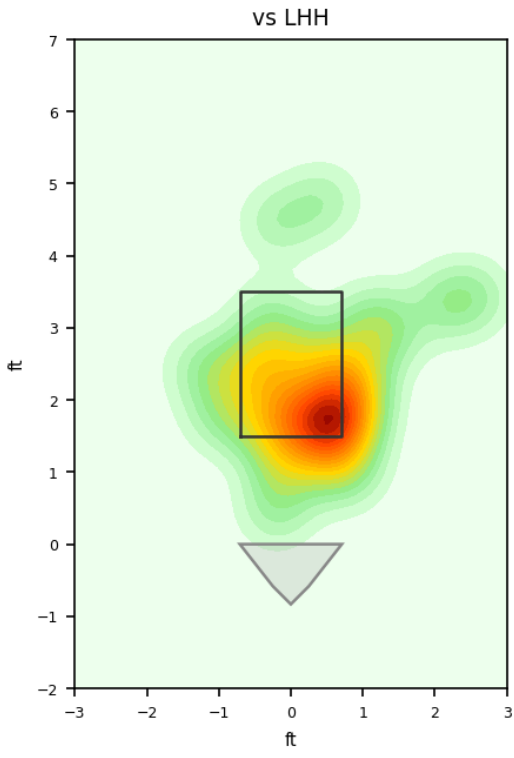
## Movement Profile



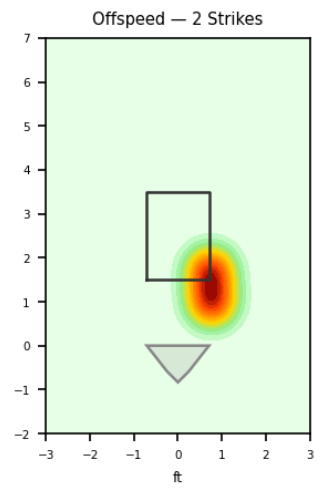
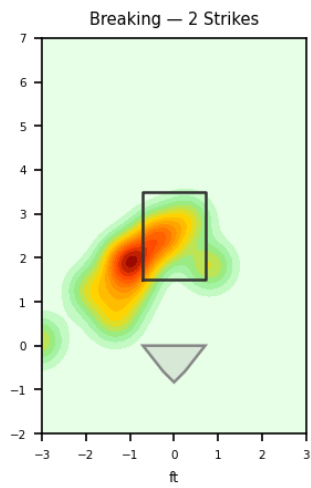
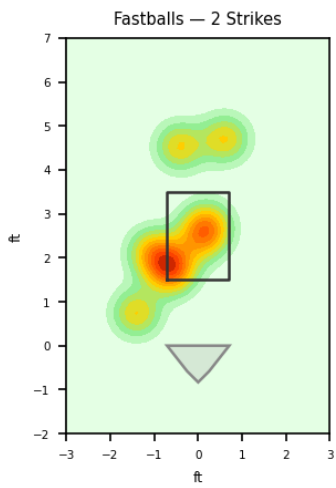
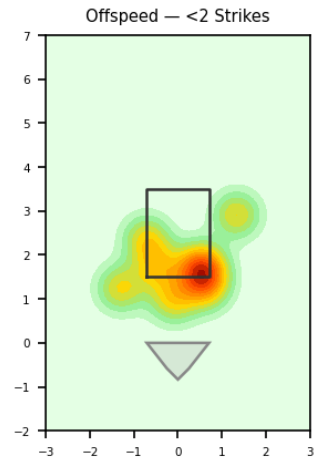
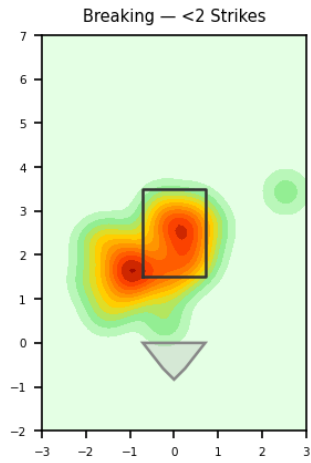
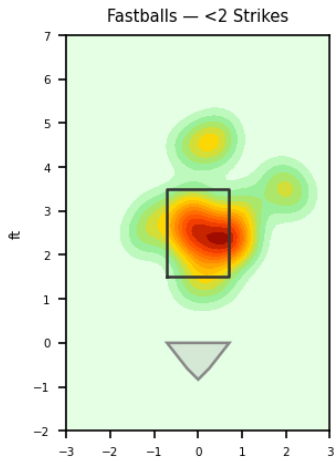


**Location Density**

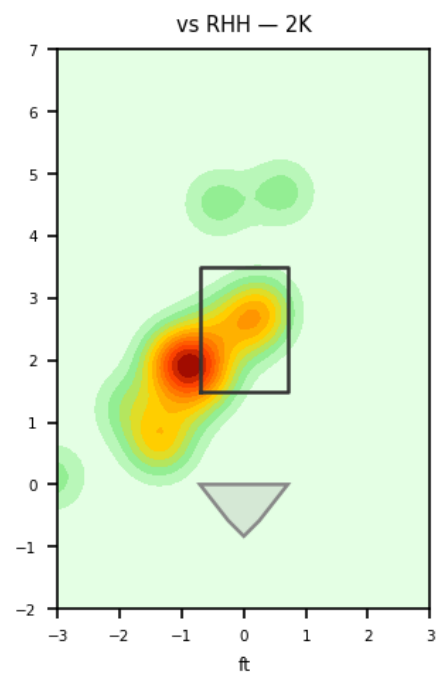
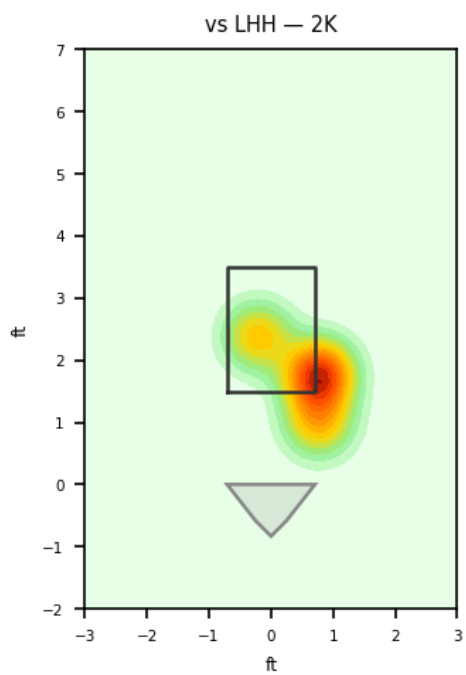
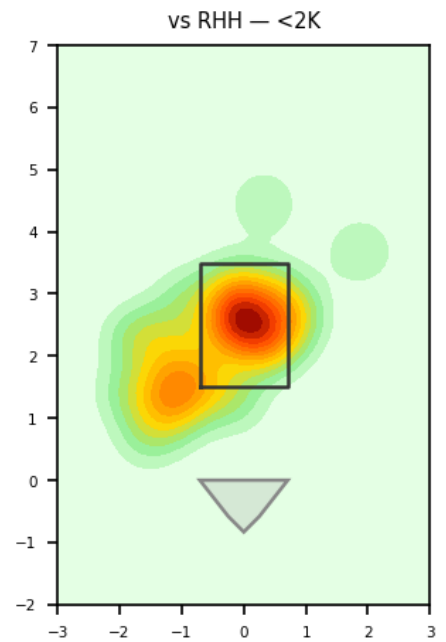
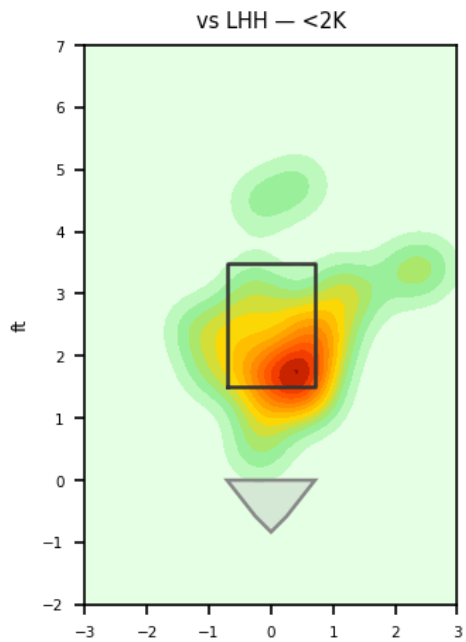




**Location by Pitch Type & Count**



**Location by Handedness & Count**



### Splits vs LHH

Pitch	Count	%	Velo	Spin	IVB	HB	Whiff%
Changeup	9	29.0%	83.5	1886.0	6.1	10.4	25.0%
Sinker	9	29.0%	91.2	1980.0	7.2	12.4	-
Slider	9	29.0%	84.4	2489.0	1.3	-3.7	60.0%
Curveball	2	6.5%	80.2	2378.0	-5.5	-6.3	100.0%
Cutter	1	3.2%	87.6	2672.0	6.0	-3.2	-
Four-Seam	1	3.2%	91.1	2087.0	13.7	10.7	-

### Splits vs RHH

Pitch	Count	%	Velo	Spin	IVB	HB	Whiff%
Slider	19	42.2%	86.1	2582.0	2.3	-3.2	75.0%
Sinker	10	22.2%	92.2	1937.0	7.4	11.0	50.0%
Four-Seam	9	20.0%	93.5	2121.0	12.8	9.9	-
Curveball	6	13.3%	81.0	2396.0	-5.4	-8.2	50.0%
Changeup	1	2.2%	88.0	1840.0	11.8	9.2	-

## Advanced Pitching (TrackMan)

Stat	Value	Stat	Value
Pitches	76	Games	1
Avg Velo	87.4 mph	Max Velo	94.6 mph
Avg Spin	2243.0 rpm	Extension	5.7 ft
IVB	4.6 in	HB	3.5 in
Whiffs	10	BIP	18
Avg Exit Velo	82.1 mph	Dates	2026-04-18 to 2026-04-18

### Pitch Mix

Pitch Type	Count	Avg Velo	Max Velo	Avg Spin	IVB	HB	Whiffs	BIP
Slider	28	85.6	89.2	2552.0	2.0	-3.3	6	6
Sinker	19	91.7	93.8	1957.0	7.3	11.7	1	3
Changeup	10	84.0	88.0	1881.0	6.7	10.3	1	3
Four-Seam	10	93.3	94.6	2118.0	12.8	10.0	0	5
Curveball	8	80.8	81.7	2391.0	-5.4	-7.7	2	1
Cutter	1	87.6	87.6	2672.0	6.0	-3.2	0	0

## Traditional Pitching (API)

---

Stat	Value	Stat	Value
W-L	0-0	ERA	3.6
G/GS	1/1	SV/HD	0/0
IP	5.0	H/ER/HR	5/2/0
K/BB	4/1	K/BB Ratio	4.0
WHIP	1.2	K/9	7.2
BB/9	1.8	BF	20